

APPROACH CHART - ICAO

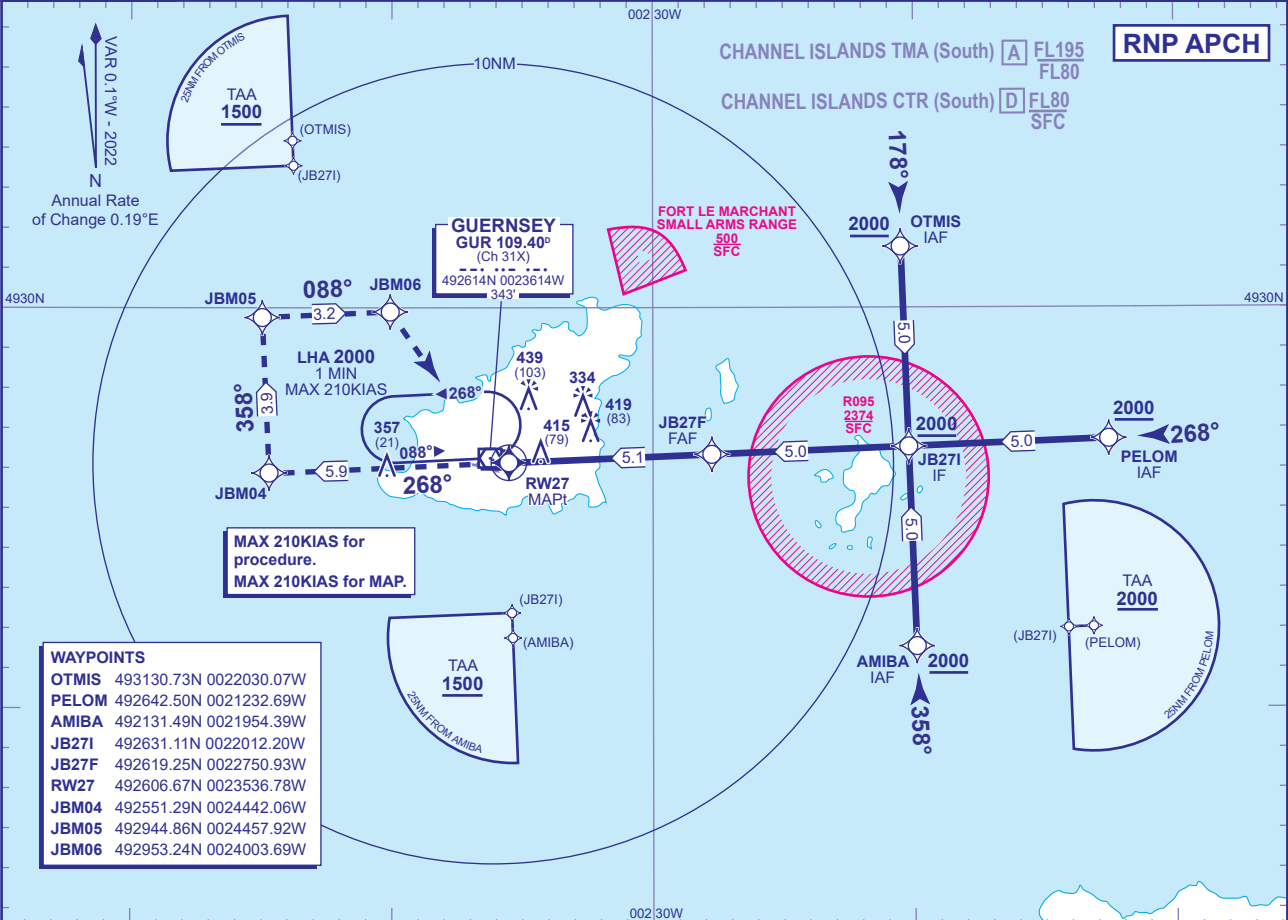
GUERNSEY

RNP
RWY 27
(ACFT CAT A,B,C,D)



APP	128.655	GUERNSEY APPROACH	AD ELEVATION	336
TWR	119.955	GUERNSEY TOWER	THR ELEVATION	336
GMC	121.805	GUERNSEY GROUND	OBSTACLE ELEVATION 439 AMSL (103) (ABOVE THR)	
RAD	124.505	GUERNSEY RADAR		
ATIS	109.400	GUERNSEY INFORMATION	BEARINGS ARE MAGNETIC	

EGNOS	CH 65543 E27A
MIN TEMP	-5°C
TRANSITION ALTITUDE	5000



WAYPOINTS

OTMIS	493130.73N 0022030.07W
PELOM	492642.50N 0021232.69W
AMIBA	492131.49N 0021954.39W
JB27I	492631.11N 0022012.20W
JB27F	492619.25N 0022750.93W
RW27	492606.67N 0023536.78W
JBM04	492551.29N 0024442.06W
JBM05	492944.86N 0024457.92W
JBM06	492953.24N 0024003.69W

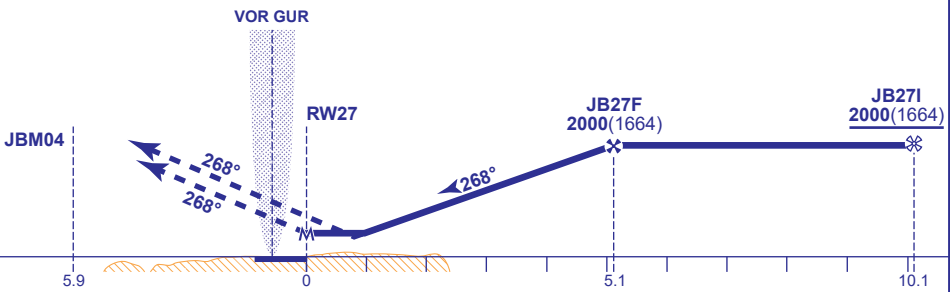
MAX 210KIAS for procedure.
MAX 210KIAS for MAP.

RECOMMENDED PROFILE LPV/VNAV -Vertical Path Angle 3.0° (LNAV 5.24%), 318FT/NM

NM to RW27	5	4	3	2	1
ALT(HGT)	1980(1644)	1660(1324)	1340(1004)	1020(684)	700(364)

TCH 50

MAPt (LNAV) RW27
Continuous climb to 3000.
Initially climb straight ahead to JBM04, then turn right to JBM05, JBM06 and VOR GUR to join the hold or as directed by ATC



Aircraft Category		A	B	C	D	Rate of descent	G/S KT	160	140	120	100	80
OCA (OCH)	LPV	536(200)	536(200)	536(200)	536(200)		FT/MIN	850	740	640	530	420
	LNAV/VNAV	660(324)	660(324)	660(324)	660(324)							
	LNAV	680(344)	680(344)	680(344)	680(344)							
VM(C)OCA (OCH AAL)		Total Area	740(404)	830(494)	930(594)	1030(694)						

- NOTE 1** Pilots should 'Request RNP Approach' on first contact with Guernsey.
NOTE 2 VOR GUR required for Missed Approach.
NOTE 3 Authority to penetrate restricted area R095 will be granted by Guernsey ATC prior to start of procedure.
NOTE 4 Aircraft will normally be required to hold not lower than 3000.

CHANGE (7/24): MAG VAR. ANNUAL RATE OF CHANGE.